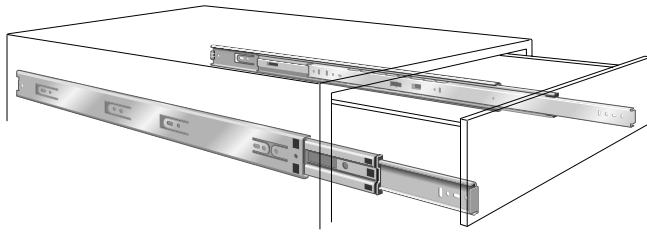


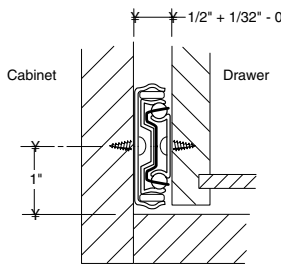
\* **NOTE:** Consult Customer Service for stock availability information on different sizes, packages and finishes.

**8400, 8405 Box or File Drawer Slide**

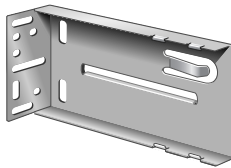
*Heavy-duty, precision slides for box drawer or pedestal file drawers up to 24" wide.*



**8400/8405 Drawer Slide**



**8400/8405**



**8402**

**S P E C I F I C A T I O N S**

- number** 8400 Full Extension Drawer Slide  
8405 1" Overtravel Drawer Slide
- mounting** Side, for frame and frameless construction\*  
  
\***NOTE:** 8400 may be used in a horizontal position with a reduced load rating of 30 pounds.
- height** 1-13/16"
- clearance** 1/2" plus 1/32" minus 0" each side
- load rating** 100-Pound Class (BHMA, KCMA, and BIFMA applications)
- finish** Anochrome™ (bright zinc chromate electro-plated with a lacquer top coat).  
Also available in Ebony Black™ finish (black zinc chromate electro-plated with a lacquer top coat), and Epoxy-coated White finish.
- action** Telescoping, full-extension on precision steel ball bearings.
- features** 32mm hole pattern with direct access mounting. Lever disconnect for easy drawer removal. Ball retainer latch and ramps for easy drawer insertion. Drawer adjustment without removal. Flexible mounting tabs self-adjust to side clearance. Metal ball retainer holds 3 bearings per inch of race for smooth and quiet motion. Polymer stop cushions. Non-handed.
- sizes** **8400:** 10", 12", 14", 16", 18", 20", 22", 24", 26", and 28".  
**8405:** 14", 16", 18", 20", 22", and 24".  
  
***NOTE:** Consult price list or Customer Service for stock availability information on different sizes, packages and finishes.*
- packaged**
  - **Poly pack (8400P):** 10 sets individually poly-packaged with screws and installation instructions.
  - **Bulk pack (8400B):** 10 pairs per box; screws not included.
  - **Quantity pack (8400Q):** 100 cabinet members (5 cartons) and 100 drawer members (1 or 2 cartons depending on length). Screws not included.
  - **Warehouse pack (8400WP):** One set per bag with screws and installation instructions. 10 sets per warehouse pack shipper/display carton.
- accessories** **8402 Optional Rear Mounting Bracket**  
Non-handed snap-in action; must be screw secured; 2-3/4" maximum adjustment.
- packaged**
  - **Standard pack:** 20 brackets per carton.
  - **Barrel Pack:** 400 brackets per fiber barrel.
  - **Warehouse pack:** Two brackets per bag with screws. 20 bags per warehouse pack shipper/display carton.